

BAADER CONTRAST-BOOSTER

A unique filter for many different astronomical tasks – incomparable in acuity to combinations of generic color filters, made of raw polished glass – where surface inaccuracy adds up in the optical wave front to an unbearable degree! Especially designed to improve the ubiquitous beginners telescopes – to provide a professional replacement for the simple „dark green“ Moon & Solar-Filters made of „raw polished“ glass.

(Note: for solar observation use only in combination with Baader AstroSolar Safety Film!)

- Eliminates the color error of economy Refractors
- Clearly puts the real quality of the lens on display
- Removes the bluish „hue“ (= lack of contrast) during lunar-, planetary-, solar- and terrestrial observation!
- Strongly emphasizes surface detail on Jupiter and Mars! If you have never seen the GRS (Great Red Spot) on Jupiter – with this filter you will!
- Over 95% transmission – provides a bright, brilliant image compared to the usual dark green color filters, used to bring out detail on Jupiter. Color recognition will be retained!
- The ultimate in lunar filters! Moon (and Sun!) appear much more natural in color (with a slight yellowish tint), compared to the usual low priced dark green Moon-filters, usually offered for beginners telescopes.
- Completely removes distracting false color and the resulting smeared and washed out image details. You have never ever seen the Moon or the Sun (with AstroSolar Safety Film) so tack sharp in an economy priced telescope!
- Blocks atmospheric „stray light“ (skyglow). Sky-background turns into pitch black!
- Fits each and every standard filter thread;
- Combines with the (planeoptically polished) BAADER Infrared Cut-Filter. In this combination all blue scatter as well as unfocused near infrared light is completely removed – an absolute MUST for digital imaging!
- Planeoptically polished, suitable for being used in front of a binocular viewer, or for afocal image projection during

digital imaging (way in front of the focal plane!)

- No deterioration of resolution with magnifications of 200x and more – as with „raw polished“ (flame polished) glass!
- Substrate (glass melt) Neodymium doped glass
- Coating/rear face: 7-layer hard-multicoating, featuring 0,25% reflection
- Coating/front face: 23-layer dielectric long pass blocker
- Ionbeam hardened coatings on both faces, absolutely scratch resistant – may be cleaned any time without fear
- A significant part of City Light Air Pollution, as well as Atmospheric Airglow is removed from the telescopic image.

Discover your telescope anew – with a BAADER Contrast Booster

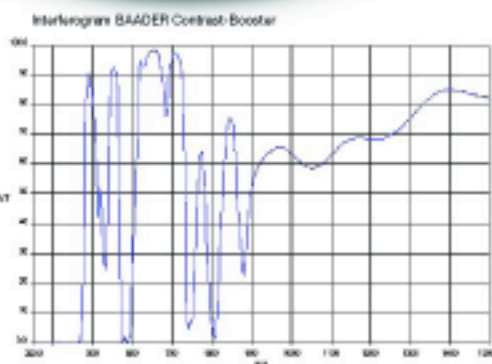
1¼" BAADER Contrast-Booster

Item.-No.: 245 8360

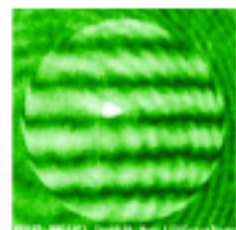
2" BAADER Contrast-Booster

Item.-No.: 245 8365

Eliminate Color Aberration in Achromatic Refractor Telescopes!



Interferogram displays parallel lines – definite proof of true fineoptical quality. This filter is good for any magnification – whatever the quality of your telescope of atmospheric conditions will allow.



Sold in the USA by:

**Company Seven Astro-Optics
Box 2587, Montpelier, MD 20709-2587
www.company7.com | 301-953-2000**